



www.english-malta.com

#myGatewayToSuccess



Adults • Parent and Child • 50+
Price List and Brochure 2025



Gateway School of English

GSE is an established family-owned English language school in Malta which has been in operation for 23 years since 2002. Every year GSE welcomes more than 1500 students from all over the world who choose Malta as their English language learning destination.

We offer courses for adults (General or Intensive, Business English groups or combination courses, Exam Preparation, Professional English etc.), courses for families (parents travelling with children aged 4 to 10 years), 50 Plus Programmes, Teacher Training courses including those funded by Erasmus, and Junior Programmes for children and teenagers between 11 to 17 years of age, which are available for both individuals and groups all year round.

Below are some things to keep in mind when choosing GSE:

- GSE is located in St Julian's, in a quiet and elegant neighbourhood only 12 minutes' walk from the vibrant metropolitan area of Spinola Bay and St Julian's Bay. The school's environs strike the perfect balance between the peace and quiet that are conducive to study and relaxation, and the proximity to the busier seaside area.
- Gateway School of English is well known for the excellent mix of nationalities in both classrooms and accommodation all year round.
- GSE is fully licensed by the Malta ELT (English Language Teaching) Council, which is the regulatory body and licensing authority within the Ministry of Education responsible for the English language schools in Malta.
- High tuition standards and high English learning success rate thanks to an excellent academic team of well qualified and dedicated teaching staff.
- All classrooms are equipped with the latest digital classroom technology.
- Individual attention from teachers and management at all times and regular one-to-one tutorial sessions with the Director of Studies, ensuring swift academic progress in the shortest possible time.
- GSE organises its own social programme all throughout the year with a combination of cultural and leisure activities for students to interact and practise their English outside the classroom.
- GSE is open all year round, including Christmas week. Lessons are not held on public holidays that fall on weekdays and will not be recovered.
- GSE offers school residence accommodation for adults and families (parents with children) right next to the school on B&B basis (breakfast served Monday to Friday). The residence is equipped with modern cooking facilities in a communal kitchen setting, while all bedrooms are fully air-conditioned. Only 3 minutes from bedroom to classroom!
- We also offer homestay accommodation within walking distance from the school. We also have host families within a short bus ride away.
- For those who prefer a different option, we also offer a choice of hotel accommodation and holiday apartments.
- GSE offers online courses for all ages all year round. We offer both group tuition as well as private/individual tuition. Online lessons are live sessions with fully licensed teachers who teach at our school in Malta. Students attending online courses will receive an end of course attendance certificate at the end of the course.
- Visit www.english-malta.com/english-courses-malta/online-courses/ for more information.



Courses Price List

All prices are in Euros (€) and per Person per Week. High Season: 30th June until 29th August 2025. 1 week = 5 days

Short stays (1 to 7 Weeks)

| General English Courses | Low Season | High Season |
|---|------------|-------------|
| General English group 20 lessons per week | 155 | 155 |
| Intensive General English group 30 lessons per week | 190 | 190 |
| General English 20 lessons group + 10 lessons private tuition (one-to-one) per week | 550 | 600 |
| General English 20 lessons group + 20 lessons private tuition (one-to-one) per week | 980 | 1030 |
| One-to-one General English 20 lessons per week | 825 | 875 |
| One-to-one General English 30 lessons per week | 1200 | 1250 |
| One-to-one General English 40 lessons per week | 1550 | 1600 |
| Business English Courses | | |
| Business English group 20 lessons per week | 190 | 240 |
| Intensive Business English group 30 lessons per week | 285 | 335 |
| One-to-one Business English 20 lessons per week | 825 | 875 |
| One-to-one Business English 30 lessons per week | 1200 | 1250 |
| One-to-one Business English 40 lessons per week | 1550 | 1600 |
| Combination General English group 20 lessons per week + One-to-one Business English 10 lessons per week | 550 | 600 |
| Combination Business English group 20 lessons per week + One-to-one Business English 10 lessons per week | 680 | 730 |
| Combination Business English group 20 lessons per week + One-to-one Business English 20 lessons per week | 915 | 965 |
| Exam Preparation Courses (Cambridge ESOL, KET, PET, FCE, CAE, CPE, IELTS, TOEFL IBT, TOEIC) | | |
| IELTS 10 lessons per week | 100 | 100 |
| IELTS 20 lessons per week | 190 | 240 |
| Group 20 lessons per week (all other exam preparation courses) | 490 | 540 |
| Group 30 lessons per week (all other exam preparation courses) | 735 | 785 |
| Combination group General English 20 lessons + One-to-one Exam Preparation (Private tuition) 10 lessons per week | 550 | 600 |
| Professional English Courses | | |
| Combination General English group 20 lessons per week + One-to-one Professional English 10 lessons per week | 635 | 685 |
| Combination General English group 20 lessons per week + Professional English group 10 lessons per week (min. 2 students) | 565 | 615 |
| Closed Groups 20 lessons per week (available for minimum 4 students) | 390 | 440 |
| Teacher Training Group Courses (including Erasmus) | | |
| The Gateway Teacher Training Primary Education Programme 30 lessons per week including 2 Half Day activities (Valletta by night & Mdina Tour) | 430 | 430 |
| The Gateway Teacher Training Secondary, Tertiary & Adult Education Programme 30 lessons per week including 2 Half Day activities (Valletta by night & Mdina Tour) | 430 | 430 |
| The Gateway Teacher Training Diversity in Education Programme 30 lessons per week including 2 Half Day activities (Valletta by night & Mdina Tour) | 430 | 430 |

Long stays (8 Weeks Plus and 24 Weeks Plus)

| General English Courses (8 Weeks Plus) | |
|---|-----|
| General English group 20 lessons per week | 100 |
| Intensive General English group 30 lessons per week | 150 |
| General English Courses (24 Weeks Plus) | |
| General English group 20 lessons per week | 90 |
| Intensive General English group 30 lessons per week | 135 |

Rates Include: Course as booked | Registration fees | Course Certificate | Monthly Progress Test | One-to-One Tutorials with the Director of Studies every two weeks to monitor student's progress | Welcome Pack | Student Card | Free SIM Card | Free Wi-Fi | 24 hours Welfare Assistance

Course Material Fee: Euro 45 for the course book. **Change Fee:** First two changes at no charge. Third change onwards Euro 20 for every change.

Public holidays that fall on weekdays: Any group lessons missed on public holidays will not be recovered on other days. One-to-One lessons (private tuition) will be compensated on other days.

Other fees (optional): Airport Transfers (Return both ways: arrival and departure): €50 + €15 per additional person travelling on the same flight. International Medical/Travel Insurance: €12 per week. Visa extension (for students extending Visa in Malta) Admin Fee: €50. Extra One-to-one private tuition: €40 per lesson.

Accommodation Price List

All prices are in Euro (€) and per Person per Week. High Season: 27th June until 31st August 2025. 1 week = 7 nights

GSE School Residence - Fully Air-Conditioned Bedrooms (Heating & Cooling*)

GSE School Residence is located right next to the school (3 mins from bedroom to classroom) available on Bed & Breakfast basis, served Mon - Fri including Public Holidays. Communal cooking facilities are also available for students staying at the GSE School Residence. Self-service laundry facilities also available.

| Bed & Breakfast basis incl. cooking facilities - Short stays (1 to 7 Weeks) | Low Season | High Season |
|---|------------|-------------|
| School Residence Twin Room (fully air-conditioned heating & cooling; shared bathroom) | 191 | 251 |
| School Residence Triple/Quadruple Room (fully air-conditioned heating & cooling; shared bathroom) | 171 | 231 |
| School Residence Single Room (fully air-conditioned heating & cooling; shared bathroom) | 380 | 450 |
| Bed & Breakfast basis incl. cooking facilities - Long stays (8 Weeks Plus) | Low Season | High Season |
| School Residence Twin Room (fully air-conditioned heating & cooling; shared bathroom) | 180 | 240 |
| School Residence Triple/Quadruple Room (fully air-conditioned heating & cooling; shared bathroom) | 160 | 220 |
| School Residence Single Room (fully air-conditioned heating & cooling; shared bathroom) | 360 | 430 |
| Bed & Breakfast basis incl. cooking facilities - Long stays (24 Weeks Plus) | Low Season | High Season |
| School Residence Twin Room (fully air-conditioned heating & cooling; shared bathroom) | 180 | 190 |
| School Residence Triple/Quadruple Room (fully air-conditioned heating & cooling; shared bathroom) | 160 | 170 |
| School Residence Single Room (fully air-conditioned heating & cooling; shared bathroom) | 360 | 430 |

Shared Room Extra night supplement on Bed and Breakfast basis: Low Season = Euro 30 per night. High Season = Euro 37 per night.
Single Room Extra night supplement on Bed and Breakfast basis: Low Season = Euro 55 per night. High Season = Euro 65 per night.

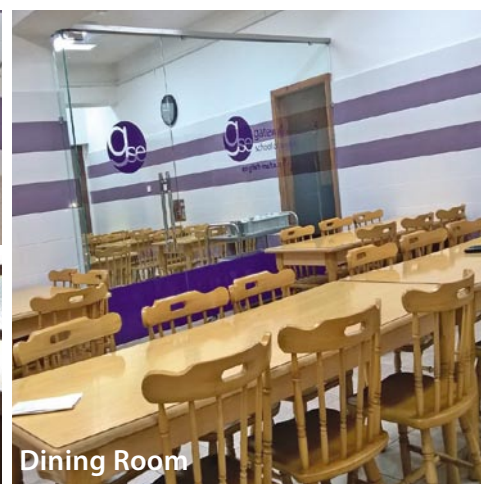
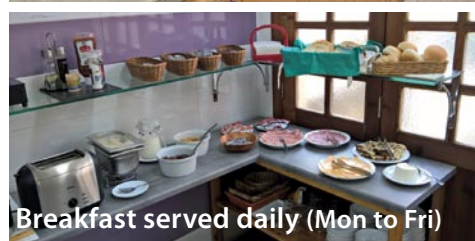
A security deposit of Euro 50 is charged in cash upon check in and will be refunded on check out.

*All bedrooms are equipped with coin-operated air-conditioning (cooling in summer & heating in winter) and fully furnished in oak.

FREE Wi-Fi accessible from bedrooms and common areas including TV/living rooms.

Bathrooms are shared; each bathroom is shared between approximately 4 students in winter and 6 students in summer.

Bedrooms are cleaned every alternate day and bed linen & bath towels changed once a week. Bathrooms and common areas are cleaned every day.



Homestay Accommodation

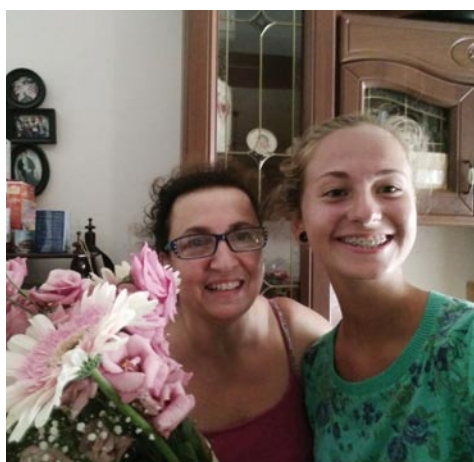
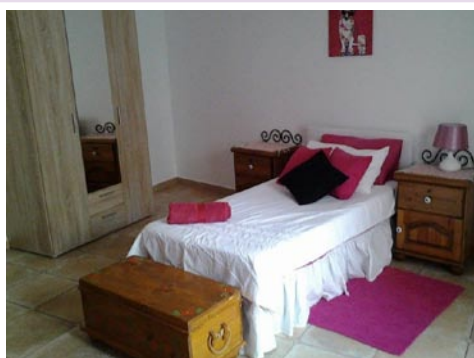
| Half Board basis - Short stays (1 to 7 Weeks) | Low Season | High Season |
|---|------------|-------------|
| Homestay Shared Room (shared bathroom) (breakfast & dinner) | 209 | 254 |
| Homestay Single Room (shared bathroom) (breakfast & dinner) | 300 | 415 |
| Half Board basis - Long stays (8 Weeks Plus) | Low Season | High Season |
| Homestay Shared Room (shared bathroom) (breakfast & dinner) | 179 | 224 |
| Homestay Single Room (shared bathroom) (breakfast & dinner) | 265 | 380 |
| Half Board basis - Long stays (24 Weeks Plus) | Low Season | High Season |
| Homestay Shared Room (shared bathroom) (breakfast & dinner) | 179 | 209 |
| Homestay Single Room (shared bathroom) (breakfast & dinner) | 265 | 295 |

Private Bathroom Supplement : Euro 80 per week. Special Dietary Requirements Supplement: Euro 70 per week.

Shared Room Extra night supplement: Low Season = Euro 30 per night. High Season = Euro 36 per night.

Single Room Extra night supplement: Low Season = Euro 38 per night. High Season = Euro 60 per night.

All carefully selected host families are located within 5 to 20 minutes' walk from the school or a short bus ride away.



Self-Catering Accommodation

GSE offers a choice of two and three bedroom self-catering apartments within walking distance from the school which are ideal for a group of friends or family members staying together. These apartments can also be booked for sole use i.e. for students wishing to stay alone in a private apartment. Prices are available upon request.



We offer a choice of three, four and five star hotel accommodation. Prices are available on request depending on the period of travel.

Family Programme (Parents and Children) Price List

All prices are in Euro (€) and per Person per Week. High Season: 30th June until 29th August 2025.

Parents pay the standard adult course and accommodation rates. Please refer to [Adult Course & Accommodation Price Lists](#).

We offer family accommodation in twin, triple & quadruple rooms depending on the number of family members.

Young Learners: children aged between 4 and 10 years.

Young Learner Courses (4 to 10 years)

1 week = 5 days

| Short stays (1 to 7 Weeks) | Low Season | High Season |
|--|------------|-------------|
| Young Learners Group 20 lessons per week | 195 | 195 |
| Young Learners Group 30 lessons per week | 285 | 285 |
| Long stays (8 Weeks Plus) | Low Season | High Season |
| Young Learners Group 20 lessons per week | 185 | 185 |
| Young Learners Group 30 lessons per week | 275 | 275 |

We offer childcare facilities in St Julian's / San Gwann within a few minutes' walk from school for children less than 4 years or babysitting services at Euro 22 per hour. For parents attending afternoon courses and who do not wish to enrol their children in afternoon lessons (Young Learner Group Course 30 lessons per week) we also offer an 'afternoon play class' option Monday to Friday from 1pm until 2.30pm at Euro 40 per day.

Young Learner Accommodation GSE School Residence / Homestay

1 week = 7 nights

| Short stays (1 to 7 Weeks) | Low Season | High Season |
|--|------------|-------------|
| GSE School Residence Twin/Triple/Quadruple Room (B & B basis, fully air-conditioned heating & cooling; shared bathroom) | 161 | 221 |
| Homestay Twin/Triple/Quadruple Room (half board basis, breakfast & dinner) (shared bathroom) | 189 | 249 |
| Long stays (8 Weeks Plus) | Low Season | High Season |
| GSE School Residence Twin/Triple/Quadruple Room (B & B basis, fully air-conditioned heating & cooling; shared bathroom) | 140 | 200 |
| Homestay Twin/Triple/Quadruple Room (half board basis, breakfast & dinner) (shared bathroom) | 154 | 194 |

The above accommodation prices for Young Learners are based on rooms shared with parents.

FREE GSE School Residence Accommodation for children under 4 years of age when travelling with their parents on family programmes.

Homestay accommodation for children under 4 years of age is Euro 180 per week.

Half Board basis in host families consists of breakfast & dinner. Bed & Breakfast basis at GSE School Residence consists of breakfast, served daily Monday to Friday including on Public Holidays. Communal cooking facilities are also available for families staying at the GSE School Residence. We also offer a choice of three, four and five star hotel accommodation and self-catering apartments for families. Prices are available on request.

10+

We also accept children over 10 years of age travelling with their parents. For course prices, please refer to our Junior Programme price list. When staying at GSE Adult Residence with parents, children over 10 years pay the adult accommodation rate.



50 Plus Programme Price List

All prices are in Euro (€) and per Person per Week.

GSE 50+ Programmes are held 4 times a year in combination with major cultural events taking place in Malta namely Carnival, Easter, Notte Bianca & Birgu by Candlelight and Christmas/New Year.

We offer a choice of accommodation options on Bed & Breakfast or Half Board Basis. 50+ Programmes are exclusively for mature students wishing to improve their English, make new friends from all over the world and experience Maltese Mediterranean culture. GSE offers a wide range of free time activities through which students can interact, practise their English and visit Malta's most popular attractions.

| 2025 | Weekly Course Price 1 week = 5 days | Weekly Accommodation Price 1 week = 7 nights |
|--|--|---|
| Carnival Programme 28th February till 14th March | General English Group Course (20 lessons per week) € 190 per person | GSE Residence on B&B Basis with cooking facilities: Twin Room : € 191 per person Single Room: € 380 per person Host Family on Half Board Basis (Breakfast & Dinner): Twin Room: € 209 per person Single Room: € 300 per person |
| Easter Programme 11th April till 25th April | General English Group Course (20 lessons per week) € 190 per person | GSE Residence on B&B Basis with cooking facilities: Twin Room : € 191 per person Single Room: € 380 per person Host Family on Half Board Basis (Breakfast & Dinner): Twin Room: € 209 per person Single Room: € 300 per person |
| Autumn Programme 26th September till 10th October | General English Group Course (20 lessons per week) € 190 per person | GSE Residence on B&B Basis with cooking facilities: Twin Room : € 191 per person Single Room: € 380 per person Host Family on Half Board Basis (Breakfast & Dinner): Twin Room: € 209 per person Single Room: € 300 per person |
| Christmas & NY Programme 19th December 2025 till 2nd January 2026 | General English Group Course (20 lessons per week) € 190 per person | GSE Residence on B&B Basis with cooking facilities: Twin Room : € 191 per person Single Room: € 380 per person Host Family on Half Board Basis (Breakfast & Dinner): Twin Room: € 209 per person Single Room: € 300 per person |



We offer a choice of three, four and five star hotel accommodation. Prices are available on request depending on the period of travel.

The below are sample activities for each programme. Each activity can be booked individually. Prices for each activity are per person and include transport.



Carnival Programme

Gozo Afternoon Tour & Carnival In Gozo: € 40; Marsaxlokk Fishing Village, St Peter's Pool Bay & Blue Grotto: € 20, Valletta Guided Tour & Carnival in the Capital City: € 30 (dinner optional); Ta' Qali Crafts Village, Buskett & Dingli Cliffs, Rabat & Mdina: € 20; Night Out in St Julian's /Sliema: € 15 (Optional dinner in St Julian's), Evening Dinner - Traditional Maltese Food: € 50; Luzzu Night Harbour Cruise : € 30; Gozo & Comino in One Day Winter Tour (Full Day): € 45; Traditional Maltese Dinner: € 50; The Three Cities Historical Tour by Night including dinner at Birgu Waterfront: € 40; Full Day Visiting Historic Temples: € 50; Golden Bay & Majjistral Nature & History Park Walking Tour: € 20; Valletta by Night: € 20; Rabat, Buskett Forest, Dingli Cliffs & Mosta Dome Tour: € 20; Mdina by Night: € 20; Malta National Aquarium, Bird Park & St Paul's Bay: € 40; Dinner at Spinola Bay: € 50



Easter Programme

Gozo & Comino in One Day Winter Tour: € 45; Marsaxlokk Fishing Village, St Peter's Pool Bay & Blue Grotto (Full Day): € 19 (price of boat trip not included); Orientation Walk at St Julian's : € 17; Valletta by Night: € 19; The Three Cities Historical Tour by Night including dinner at Birgu Waterfront: € 40; Evening Dinner - Traditional Maltese Food: € 50; Maundy Thursday Tour Visiting Three Maltese Villages; Siggiewi, Qrendi & Qormi for Traditional Last Supper Exhibitions & Processions: € 25; FULL DAY TRIP Buskett & Dingli Cliffs Countryside Walk followed by Rabat & Mdina & The GOOD FRIDAY Traditional Procession in Zebbug: € 25; Gozo & Comino in One Day Winter Tour (Full Day): € 45; Easter Sunday Traditions at the Three Cities: € 20; Golden Bay & Majjistral Nature & History Park Walking Tour: € 20; Night out in St. Paul's Bay & Bugibba: € 20; Rabat, Buskett Forest, Dingli Cliffs & Mosta Dome Tour: € 20; Mdina by Night: € 20; Malta National Aquarium & St Paul's Bay: € 40; Luzzu Night Harbour Cruise : € 30; Dinner at Spinola Bay: € 50



Autumn Programme

Gozo & Comino in One Day Winter Tour (Full Day): € 45; Notte Bianca in Valletta: € 20; Marsaxlokk Fishing Village, St Peter's Pool Bay & Blue Grotto (Full Day): € 20; Orientation Walk at St Julian's : € 17; Mdina by Night: € 20; The Three Cities Historical Tour by Night including dinner at Birgu Waterfront: € 55; Evening Dinner - Traditional Maltese Food: € 50; San Anton Gardens, The Three Villages (Lija, Attard & Balzan): € 20; Rabat, Buskett Forest, Dingli Cliffs & Mosta Dome Tour: € 20; Birgu by Candlelight at the Three Cities : € 20; Full Day Visiting Historic Temples: € 50; Golden Bay & Majjistral Nature & History Park Walking Tour: € 20; Valletta by Night: € 20; Mdina & Ta' Qali Crafts Village: € 20; Night out in St. Paul's Bay & Bugibba : € 17; Malta National Aquarium, Bird Park & St Paul's Bay: € 40; Luzzu Night Harbour Cruise: € 30; Dinner at Spinola Bay: € 50



Christmas & New Year Programme

Gozo & Comino in One Day Winter Tour: € 45; Marsaxlokk Fishing Village, St Peter's Pool Bay & Blue Grotto (Full Day): € 20 (price of boat trip not included); Golden Bay & Majjistral Nature & History Park Walking Tour : € 20; Christmas Eve Traditional Celebrations In Valletta: € 35; Christmas Day Traditional Lunch in St Julian's / Sliema followed by a visit to a live crib in a Traditional Maltese Village: € 85; Malta National Aquarium, Bird Park & St Paul's Bay: € 40; Dinner at Spinola Bay: € 50; Full Day Visiting Historic Temples : Ghar Dalam, Hagar Qim, Mnajdra & Tarxien Temples. € 50; Rabat, Buskett Forest, Dingli Cliffs & Mosta Dome Tour: € 19; Mdina by Night: € 19; New Year's Eve Celebrations in Valletta: € 50; New Year's Day: Lunch in St Julian's/Sliema: € 85; The Three Cities Historical Tour by Night including dinner at Birgu Waterfront: € 45

Evening Classes

GSE offers evening English classes daily Monday to Friday from 18.30 until 20.00hrs. We offer a choice of General English classes, Business English classes and IELTS classes.

Evening Classes General English

10 lessons per week
€ 75 per week
(6 levels available)

Monday to Friday from 18.30 to 20.00 hrs

Evening Classes Business English

10 lessons per week
€ 90 per week

Monday to Friday from 18.30 to 20.00 hrs

Evening Classes IELTS Course

10 lessons per week
€ 100 per week

Monday to Friday from 18.30 to 20.00 hrs



Gateway School of English GSE Terms & Conditions for Direct Students

Registration

Please complete the registration form provided by Gateway School of English and return it by e-mail or use the online booking registration form on the Gateway School of English website. We will confirm your place on the course as well as your accommodation by sending you the Invoice. You are requested to make a deposit upon booking and prior to receiving the invoice from us. We can only guarantee places when a deposit has been received. Please send us an e-mail notification with your name and surname as soon as you make the deposit.

Visas: If you will be applying for a Visa to travel to Malta you are requested to make the deposit or full payment (some Embassies request the proof of full payment) on sending the application form. We will send you your Letter of acceptance as soon as we receive your deposit or full payment (we will specify whether a deposit or full payment is required at enquiry stage). Should you be denied a Visa to travel to Malta we will refund you the full deposit/fees less the bank transfer charges and we will also charge an administration fee of Euro 150. All GSE prices include registration fees, admin fees and taxes however GSE will only charge an admin fee in case of Visa refusal. All information related to the booking of the course & accommodation, including flight details (flight number and time of arrival/departure), is to be received by Gateway School of English (GSE) not later than 2 days prior to arrival. Registration fees, taxes and all other fees are included in the price.

Payment of Fees

Fees less the deposit must be paid in full by bank transfer or by credit card online at least one week before arrival. The payment link for online credit card payments will be provided upon booking and will be sent to you by e-mail. Alternatively, if you wish, you can also make the payment in person on your first day of school, in cash or by credit card on the school's credit card machine (ePOS – Electronic Point of Sale). (Not applicable for students who require a Visa to travel to Malta or those who need to apply for a Visa after 90 days in the Schengen zone. In this case full payment is required prior to travelling to Malta). NON SEPA (non-European) payments made by credit card at school (not online) will incur a 3% charge. For payments made by bank transfer, all bank transfer charges are to be incurred by the student (you). Fees are quoted in EURO. Payment is to be made in Euro. GSE reserves the right to reject a student for tuition and accommodation if s/he fails to settle full payment upon the stipulated day.

Course Material Fee: All students are required to pay a course book fee of Euro 30 upon booking. This is equivalent to one book which is given to you on your first day of school.

Cancellation Policy

All cancellations must be made in writing and are subject to the following:

- There are no cancellation fees if the cancellation is received earlier than three weeks prior to arrival. When deposits or full fees are paid a credit note will be issued valid for 2 years from the date of issue. The student can use the credit note for courses and/or accommodation with GSE.
- In the case of cancellations made less than three weeks prior to arrival there is a cancellation fee of 50% of the tuition and accommodation fees.

Withdrawal Policy

No fees will be refunded for:

- any student terminating the course after arrival
- any student terminating the accommodation after arrival
- any student failing to attend classes or activities

Fees are not transferable.

Complaints

In the event of a dispute between an individual student and the School, procedures are in place to facilitate the resolution of the dispute. Any complaint should first be made to the GSE School Principal. Each complaint will be fully investigated. If the matter is not resolved, the student should complain in writing within the duration of the course, while the course is still in progress. GSE cannot be held liable for any complaint received after the student's departure.

Public Holidays

Lessons missed on public holidays which fall on weekdays will not be recovered on other days. Public holidays in Malta: 1st January, 10th February, 19th March, 31st March, Good Friday, 1st May, 7th June, 29th June, 15th August, 8th September, 21st September, 8th December, 13th December, 25th December.

Class Level

All new students are required to take a GSE placement test. This may be taken online prior to arrival and will save you time on the first day as you will be placed in your level immediately, rather than having to do the test on your first day of school. Students will be placed in the appropriate level according to the result of the placement test. Should a result indicate that a student has a lower level of English, the School reserves the right to place the student in a class of a suitable level until a higher level is reached. The student is given the opportunity to discuss this matter with the Director of Studies whose decision will be final. Students may change their class level if this is agreed by the teacher and the Director of Studies.

Lessons Timetable

GSE uses a double banking system whereby lessons can be held either in the morning or in the afternoon. Morning lessons are held between 9am and 12:15pm, conversation classes as part of the Intensive English course are held between 1pm and 2:30pm, and

afternoon classes are held between 12:30pm to 3:45pm, 3pm to 6:15pm and 4pm to 7:15pm. Evening classes are held between 6:30pm and 8pm. GSE reserves the right to change lesson times and timetables at its discretion.

Holidays for long term students

Students booking a course of 8 weeks or more will be entitled to 1 week of holidays for every 4 weeks of courses booked. The holiday week/s can be spaced out and booked intermittently as long as the student sends an e-mail notification to the school at least 5 days before the first day of the holiday week. Holidays can only be taken from Monday to Friday (a full week). The number of weeks of holidays needs to be requested upon booking. If a request is not received, GSE will not amend the booking when the student is already in Malta.

Accommodation

GSE offers homestay and residence accommodation as well as other types of accommodation. GSE charges a damage deposit of Euro 50 upon check-in at the GSE adult residence. Accommodation cannot be cancelled after check-in and no refund will be given in the event that a student checks out or leaves the accommodation prior to the planned/ booked departure date. In the case of homestay accommodation (host families), GSE must be notified of any food allergies and a special dietary supplement will be charged and needs to be paid upon booking. The host family has a right to refuse to provide for special dietary requirements if the school is not notified of the food allergy/intolerance upon booking. The majority of host families also charge a minimal fee for Wi-Fi (please check your host family details which are provided together with your booking confirmation). Students booking a shared room at a host family are placed in rooms with students of the same gender, similar age group and different nationality. Students booking with a family member or friend can request to be accommodated together. On rare occasions and due to unforeseen circumstances, it is possible for a student to be placed in a host family with one or more other students of the same nationality. This may be inevitable, in which case, students cannot request a change in host family.

Course Certificate

At the end of every course the student will be awarded a Certificate of Attendance stating the level of achievement and the duration of the course, provided that he/she attends at least 80% of the lessons.

Liability

GSE, its employees and its representatives are not liable for personal injury and/or loss of or damage to personal property on the school and residence premises, whether as a result of fire, burglary, theft or otherwise. This condition also applies to public and private places, including on school trips and excursions. Whilst GSE provides assistance to its students at all times, the school directors, management and staff will not be liable for decisions taken by the local authorities.

Conduct and discipline

In the case of expulsion from the School, GSE will immediately inform the relatives and/or agent concerned that the individual has been expelled. This may result in the individual's repatriation from Malta. In the case of proven criminal offence or flagrant misconduct, GSE reserves the right to expel any student. Students are expected to behave in an orderly manner during their stay. Any wilful damage to GSE property or personnel will be treated as gross misconduct. In the case of such misconduct the student and/or his/her parents or guardians will be held personally responsible for rectifying the damage caused and GSE reserves the right to expel the student. GSE school and residence buildings are located in a prestigious residential area and students are expected to maintain good relations with neighbours by behaving in an appropriate manner. Behaviour that impairs the comfort of other persons living in the same building or in neighbouring buildings may result in immediate expulsion. Possession and/or consumption of alcohol is strictly prohibited on GSE school and residence premises. Failure to comply may result in expulsion. In the case of expulsion no refund will be given. Repatriation will be at the full expense of the student and/or his/her parents or guardians. Smoking is permitted in all the open spaces of the GSE school/residence premises. Smoking indoors is not permitted and students are obliged to abide by this regulation.

Photography & Filming

Students may be filmed and photographed during classes and activities and photos and videos can be published on the school's social media sites. If you do not wish to be filmed or photographed please inform the person taking the film/photo.

Urgent Medical Attention

If costs are incurred by the school on behalf of a student requiring urgent medical attention in Malta, GSE reserves the right to be fully reimbursed immediately for such costs. If a student is known to be suffering from a serious medical condition or psychological disorder which was not disclosed upon enrolment, GSE reserves the right to terminate its services to the individual concerned, and to inform the Authorities of this termination. GSE will not, in such cases, be responsible for the cost of repatriation.

Medical and Personal Insurance

EU citizens are entitled to free healthcare and medical attention in Malta as long as they possess a European Health Insurance card, which can be obtained free of charge from their home country (within the EU) before travelling to Malta. Students travelling from outside the EU should arrange a personal and medical insurance. GSE also offers medical and travel insurance services for students coming from non-EU countries.

Force Majeure

GSE is not liable in the event where it is unable to fulfil any service to which it is contractually bound because of fire, natural disaster, unusual adverse weather conditions, acts of government, labour disputes or other reasons which are outside its control. These terms and conditions are applicable to direct students. If you are an agent please refer to the terms and conditions for agents as well as our agency agreement.

These terms and conditions are applicable to direct students. If you are an agent please refer to the terms and conditions for agents as well as our agency agreement.

All information & prices correct at time of printing. E&OE.



Want to know more? Visit www.english-malta.com